

Guidelines for “Algorithm for Postpartum Hemorrhage”

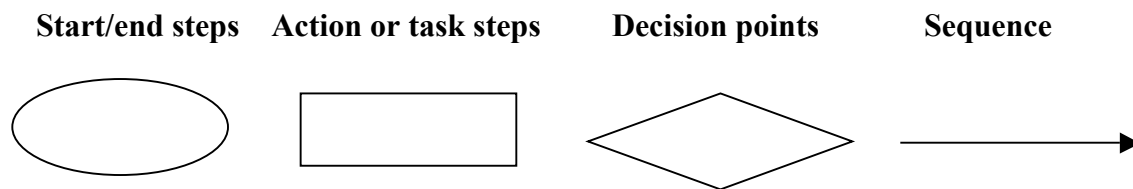
Preventing Postpartum Hemorrhage: A Matter of Patient Safety
Wisconsin Association for Perinatal Care

The purpose of an algorithm:

An algorithm identifies elements of a process. By showing sequences and steps, the algorithm for postpartum hemorrhage helps staff from different disciplines identify what needs to be done when someone recognizes heavier than normal bleeding in a newly delivered mother.

What the symbols mean:

Ovals are the start and end points. Rectangles reflect action or task steps, and diamonds are decision points. Arrows indicate the sequence of events and are linking symbols. In this algorithm, the dotted boxes with one end open provide additional information about what an action, task, or start/end point might entail.



An example of how to use the algorithm for postpartum hemorrhage:

To determine the etiology of postpartum hemorrhage (see the rectangle in the center of the algorithm), consider the most common cause of postpartum hemorrhage—tonic uterus—first. That diamond is located on the far left. If the response is “no” to atonic uterus, one returns to the “Determine etiology...” rectangle and reconsiders other potential causes as indicated by the four remaining diamonds.